

DAILY MIOC INTELLIGENCE BRIEF

MARCH 17, 2026



IMO: 8762653
RISK INDICATOR: DARK ACTIVITY
RISK TYPE: SMUGGLING



TABLE OF CONTENTS

IMO: 8762653

RISK INDICATOR: DARK ACTIVITY

RISK TYPE: SMUGGLING

- 🚨 EPIC FURY Daily Analysis - HORMUZ
- 🚨 EPIC FURY Daily Analysis - BULK CARRIERS NAVIGATING HORMUZ
- 🚨 EPIC FURY Daily Analysis - BAB-EL MANDEB
- 🚨 EPIC FURY Daily Analysis - SUEZ CANAL
- 🚨 EPIC FURY Daily Analysis - CAPE OF GOOD HOPE
- 🚨 EPIC FURY Daily Analysis - PORT TRANSSHIPMENT DELAYS
- 🚨 EPIC FURY Daily Analysis - KHARG ISLAND
- 🚨 EPIC FURY Daily Analysis - BREAKDOWN OF OPERATIONS IN THE GULF



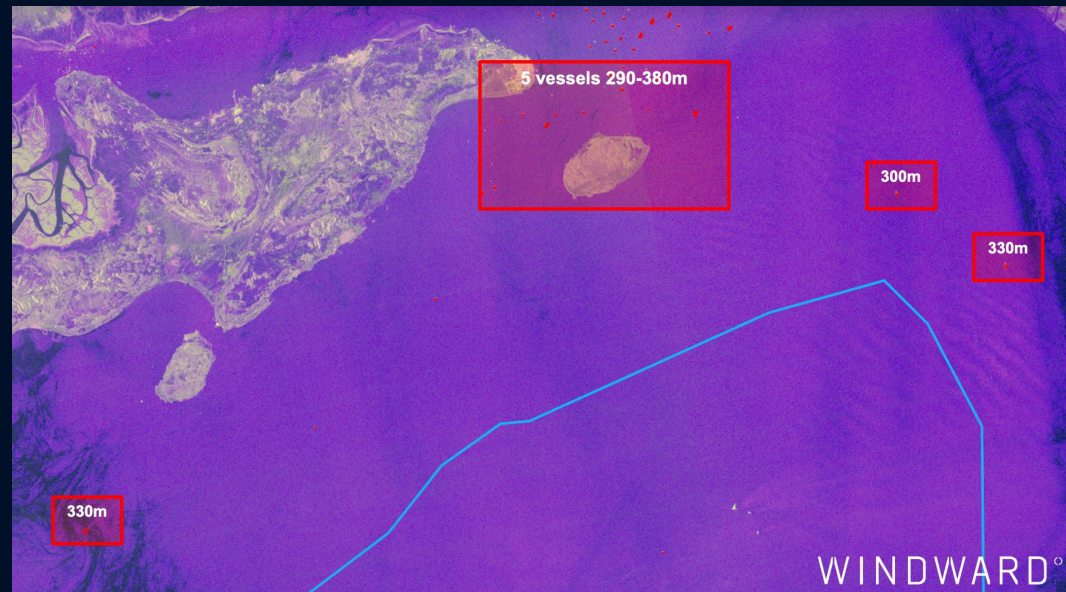
EPIC FURY Daily Analysis - HORMUZ



On March 16, 2026, remote sensing imagery (RSI) analysis detected 8 large vessels, each measuring over 290 meters in length, operating within the Strait of Hormuz.

Notably, all 8 detected vessels were engaged in dark activity, with no active AIS transmissions broadcast at the time of detection.

While the specific vessel types remain unidentified, their dimensions indicate substantial carrying capacity. If assessed as tankers, vessels of this scale could plausibly be VLCCs. If assessed as cargo vessels, possible classes include VLOCs (Very Large Ore Carriers), Ultra Large Container Ships, Capesize bulkers, or New Panamax container ships.



EPIC FURY Daily Analysis - HORMUZ

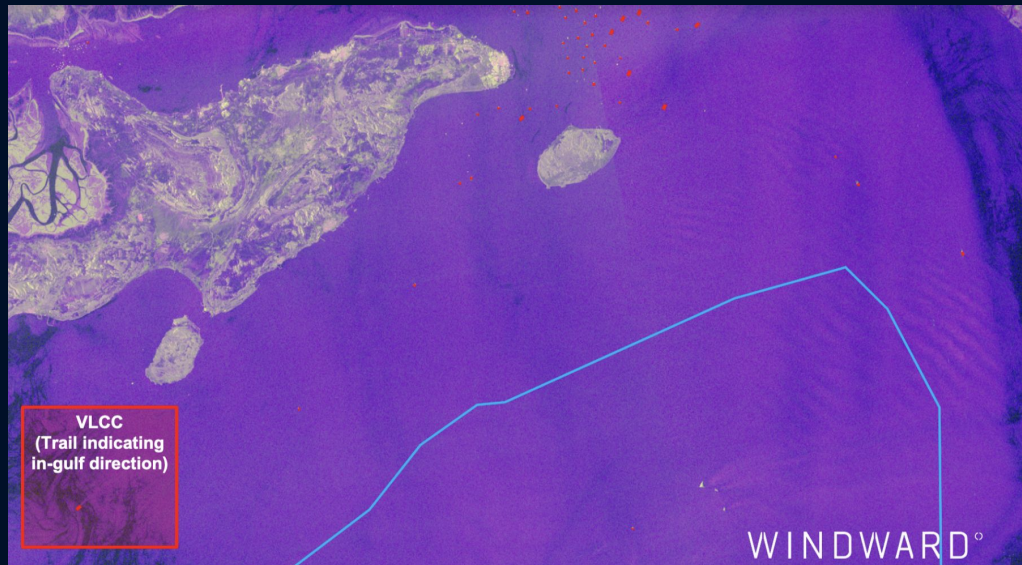


Windward Remote Sensing Intelligence Analysis revealed a vessel, likely a VLCC, heading westwards (Suggested by its trail) into the Arabian Gulf. Further analysis of Wet Cargo suggests that the vessel is likely the VORAS (IMO 9203265).

Image Date/Time: 16-03-2026 | 14:17 UTC

Operational Detection & Analysis

- **Signature Analysis:** The SAR image shows a distinct back trail indicating the vessel is making headway into the Gulf.
- **Vector:** The vessel is currently sailing into the Arabian Gulf, likely proceeding toward an Iranian terminal - matching its ballast status (Confirmed by wet cargo analysis)
- **AIS Status:** The vessel is currently dark. Its last broadcast was recorded on 13-03-2026 off Khor Fakkan.



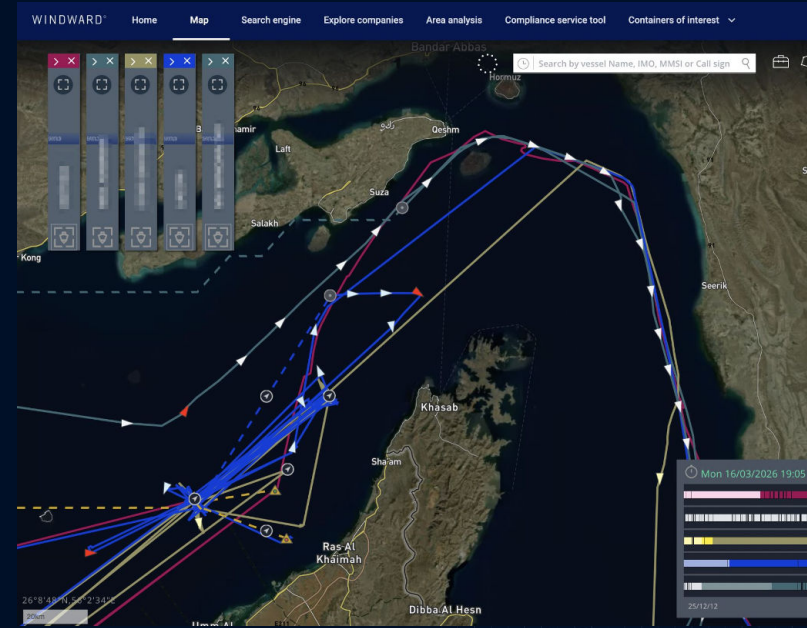
The VORAS is an OFAC-sanctioned vessel currently operating under a fraudulent Botswana flag



EPIC FURY Daily Analysis - BULK CARRIERS NAVIGATING HORMUZ



- Bulk carriers sailing eastbound to exit the Middle East Gulf are re-routing through Iranian territorial waters to navigate the Strait of Hormuz, circumventing shorter, normal international navigation channels
- Windward tracked at least five ships using this Iranian waters route over March 15 and 16.
- Traffic through the Strait of Hormuz - the waterway for 20% of the world's oil and gas - is down by approximately 97%. The new route, which allows allies and supporters to transit, illustrates how Iran's selective blockade has evolved
- The bulk carriers tracked eastbound through the strait had, in nearly all cases, previously called at Imam Khomeini port in Iran



EPIC FURY Daily Analysis - BAB-EL MANDEB



March 16, 2026, indicates an increasing volume of AIS-transmitting strait crossings with a total of 38 transits, a 280% increase compared to the previous day*.

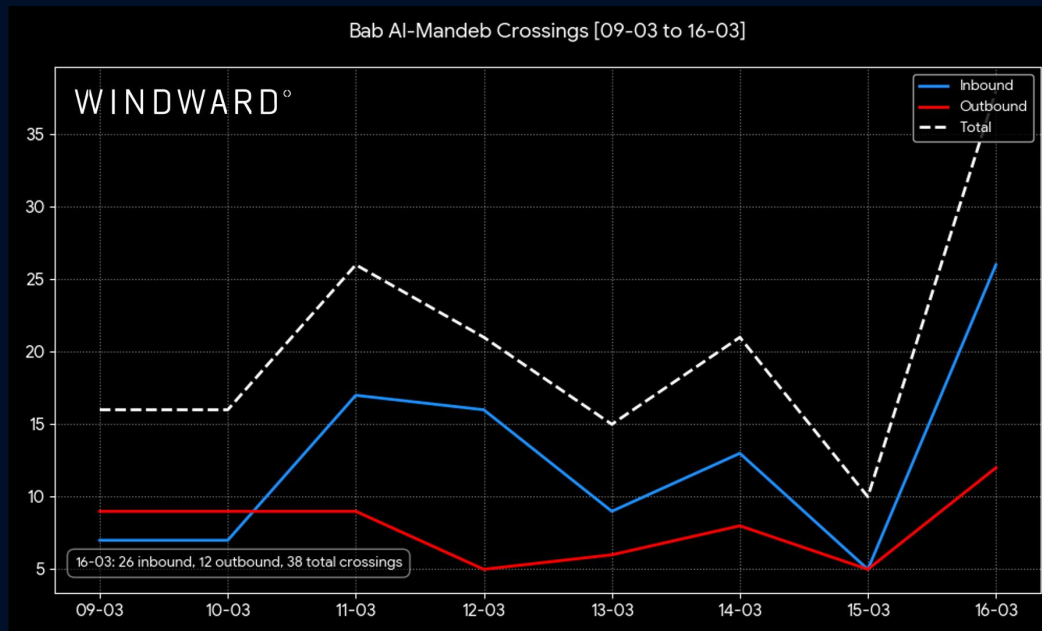
Corsage Breakdown by Subclass (Top 3):

- Bulk Carrier: 11
- Container Vessel: 8
- Crude Oil Tanker: 6

Corsage Breakdown by Flag (Top 3):

- Marshall Islands: 8
- Panama: 7
- China: 5

*AIS Transmitting Transits



EPIC FURY Daily Analysis - SUEZ CANAL



March 15, 2026 marks a 69.57% increase in vessels crossing the Suez Canal from the previous day with 39 crossings*

Corsage Breakdown by Subclass (Top 3):

- Bulk Carrier: 11
- Crude Oil Tanker: 6
- Container Vessel: 6

Corsage Breakdown by Flag (Top 3):

- Liberia: 11
- Panama: 5
- Sierra Leone: 3



*AIS Transmitting Transits



EPIC FURY Daily Analysis - CAPE OF GOOD HOPE



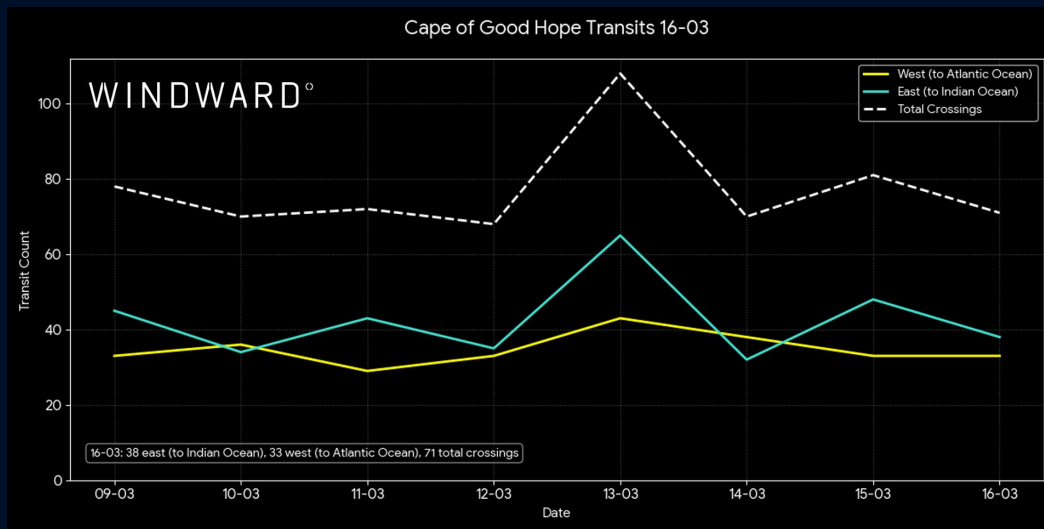
March 16, 2026 marks a 13.41% decrease in vessels crossing the Cape of Good Hope from the previous day, with 71 crossings.*

Corsage Breakdown by Subclass (Top 3):

- 33 Bulk Carrier
- 10 Container Vessel
- 4 Ore Carrier

Corsage Breakdown by Flag (Top 3):

- Marshall Islands: 14
- Liberia: 11
- Singapore: 11



*AIS Transmitting Transits





EPIC FURY Daily Analysis - PORT TRANSHIPMENT DELAYS



Transshipment delays spikes at several key Gulf hubs

Gulf:

- Umm Qasr, Iraq: 2 transshipment-delay cases (0%-baseline from previous day, 0%-baseline vs 7-day average)

Outside The Gulf:

- Karachi, Pakistan: 2 port-of-loading late-departure cases (+100.0% from previous day, -6.67% vs 7-day average); 7 port-of-loading rollovers (0%-baseline from previous day, +1125.0% vs 7-day average)
- Salalah, Oman: 11 transshipment rollovers (-57.69% from previous day, -54.97% vs 7-day average); 19 transshipment-delay cases (-72.46% from previous day, -47.64% vs 7-day average)



EPIC FURY Daily Analysis - KHARG ISLAND



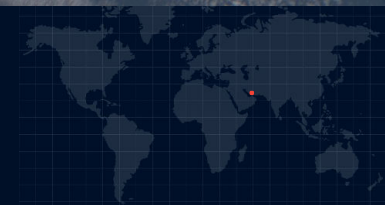
As of March 17, 2026, 0731 GMT, loading operations from the Kharg Island still persist.

Windward Remote Sensing Intelligence have detected 2 VLCCs and 1 Aframax tanker berthed at the oil terminal.

Analysis reveals that there are 16 more vessels in the Anchorage area, potentially awaiting to load

Vessel Size Distribution:

<80	5
80 - 150 meter	4
150 - 250 meter	3
250 - 333 meter	9





EPIC FURY Daily Analysis - BREAKDOWN OF OPERATIONS IN THE GULF



TOP 5 FLAGS CURRENTLY IN THE GULF:

*excluding Gulf Countries

Panama	299
Marshall Islands	156
Liberia	155
Comoros	99
Singapore	90

BREAKDOWN BY SUBCLASS:

Container Ships	51
Bulk Carriers	163
Crude Oil Tankers	83
Oil Products Tankers	93
LNG Tankers	12

TOP 5 COMPANIES LOCATIONS:

Japan
Germany
South Korea
Hong Kong
Singapore



Maintaining a persistent tactical advantage requires the transition from static monitoring to active orchestration. The Windward Maritime Intelligence Operations Center (MIOC) provides this bridge, functioning as an operational center that integrates multi-sensor intelligence - including EO, SAR, RF, HUMINT, and ADINT - with Agentic AI to Detect → Collect → Analyze threats and pre-operational indicators in real time. To move beyond data visualization and into proactive mission support, please reach out to your Windward point of contact. We are prepared to discuss aligning our Ongoing Intelligence Analysis or Ad-Hoc Forensic Deep Dives with your specific theater requirements.

DISCLAIMER

The results presented in this report were produced by the Windward System. While the Windward System is proven to yield outstanding and reliable results, these contain by nature statements, and conclusions based (inter alia) on estimates, predictions, assumptions, and data which are subject to uncertainties beyond the control of the supplier and therefore might possibly include inaccuracies. The user is therefore encouraged to examine the results and consider additional means to augment conclusions in case any action is taken.