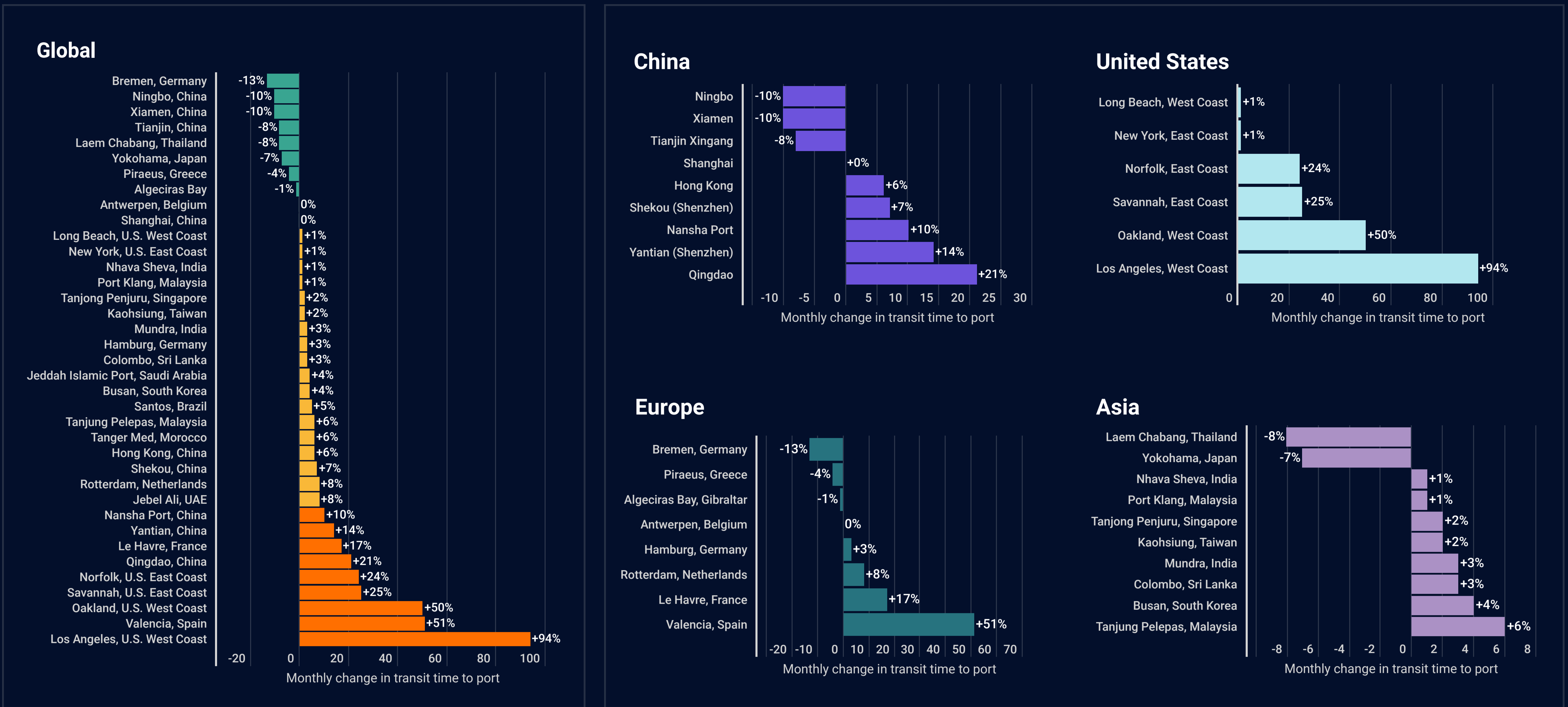


# PORT INSIGHTS

July 2022 Performance

## Transit Times to Port

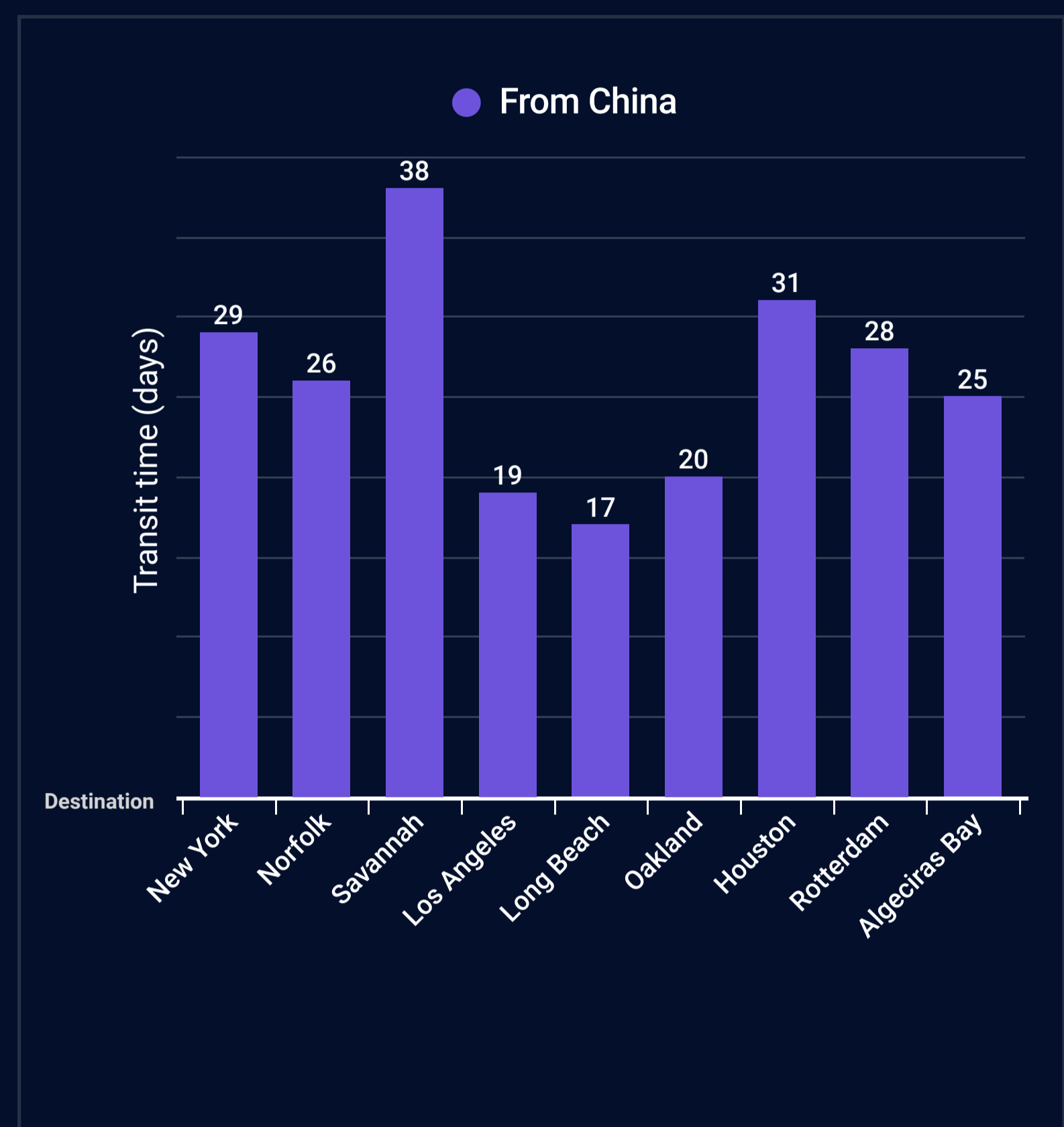
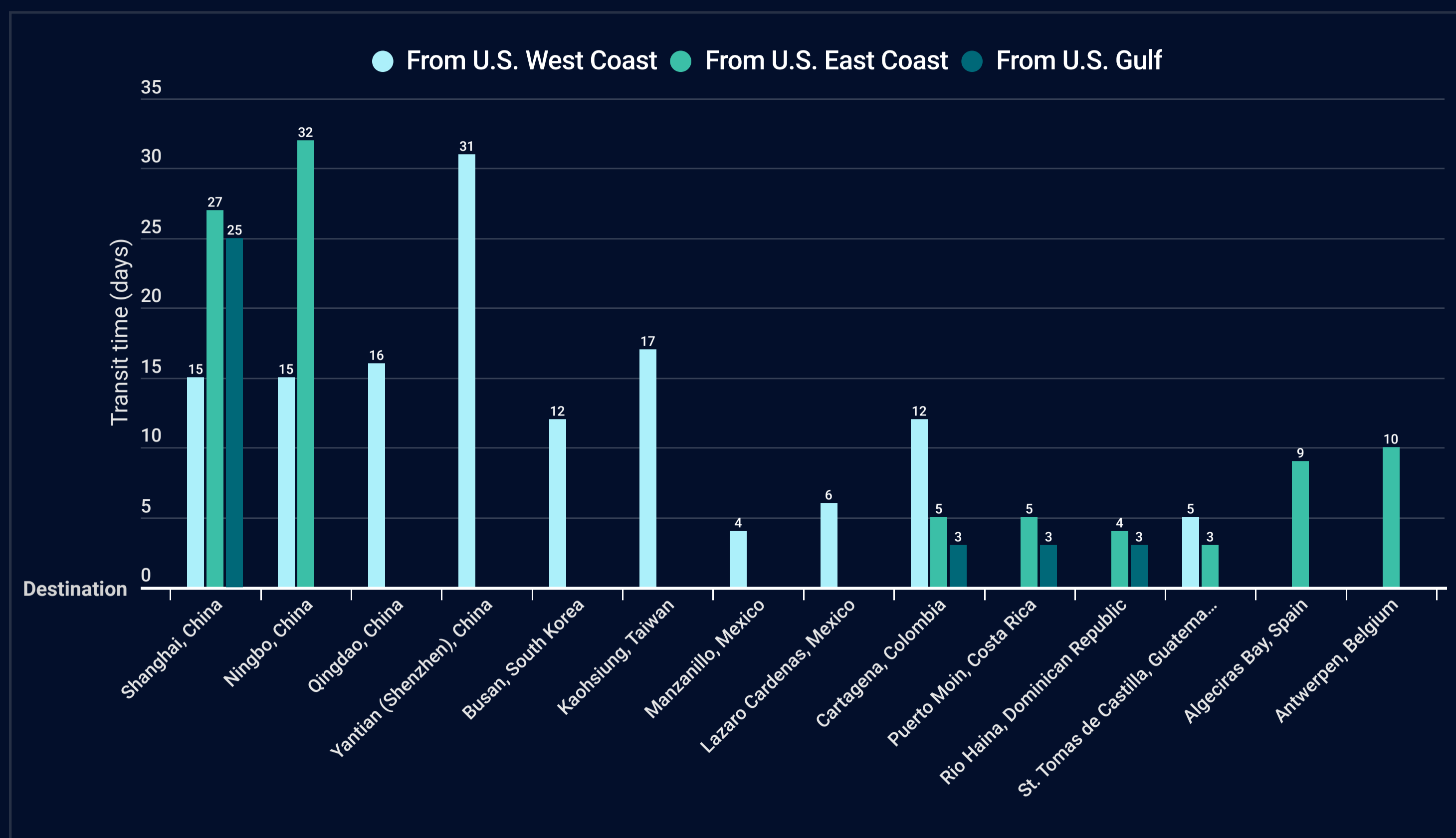
Transit times to port analyze the month-to-month change in the time it took container vessels to berth at a port, from the moment they left their previous port of call. Calculations are performed in groups, based on the location of the previous POD.



## Deep Dive of the Month:

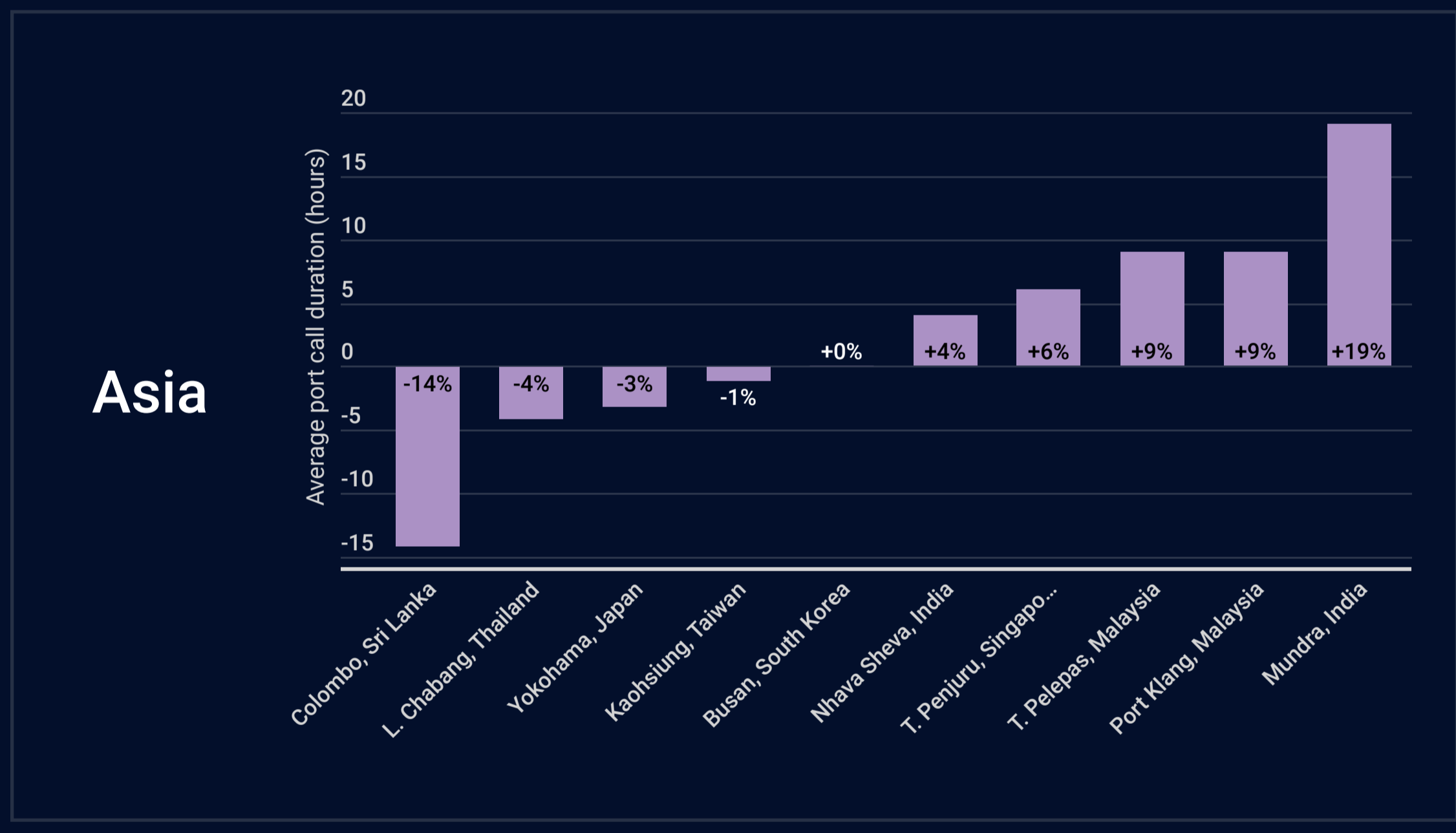
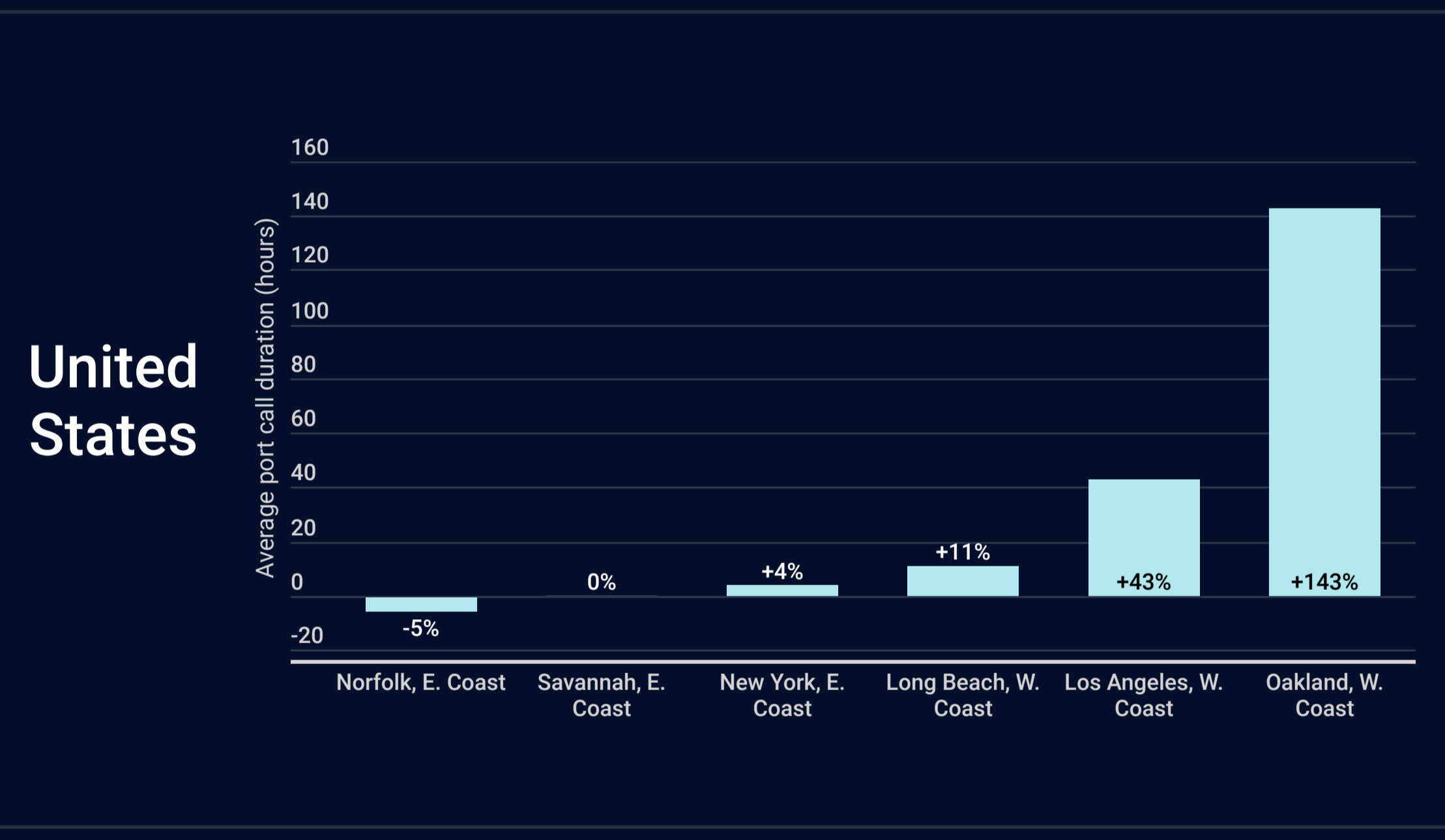
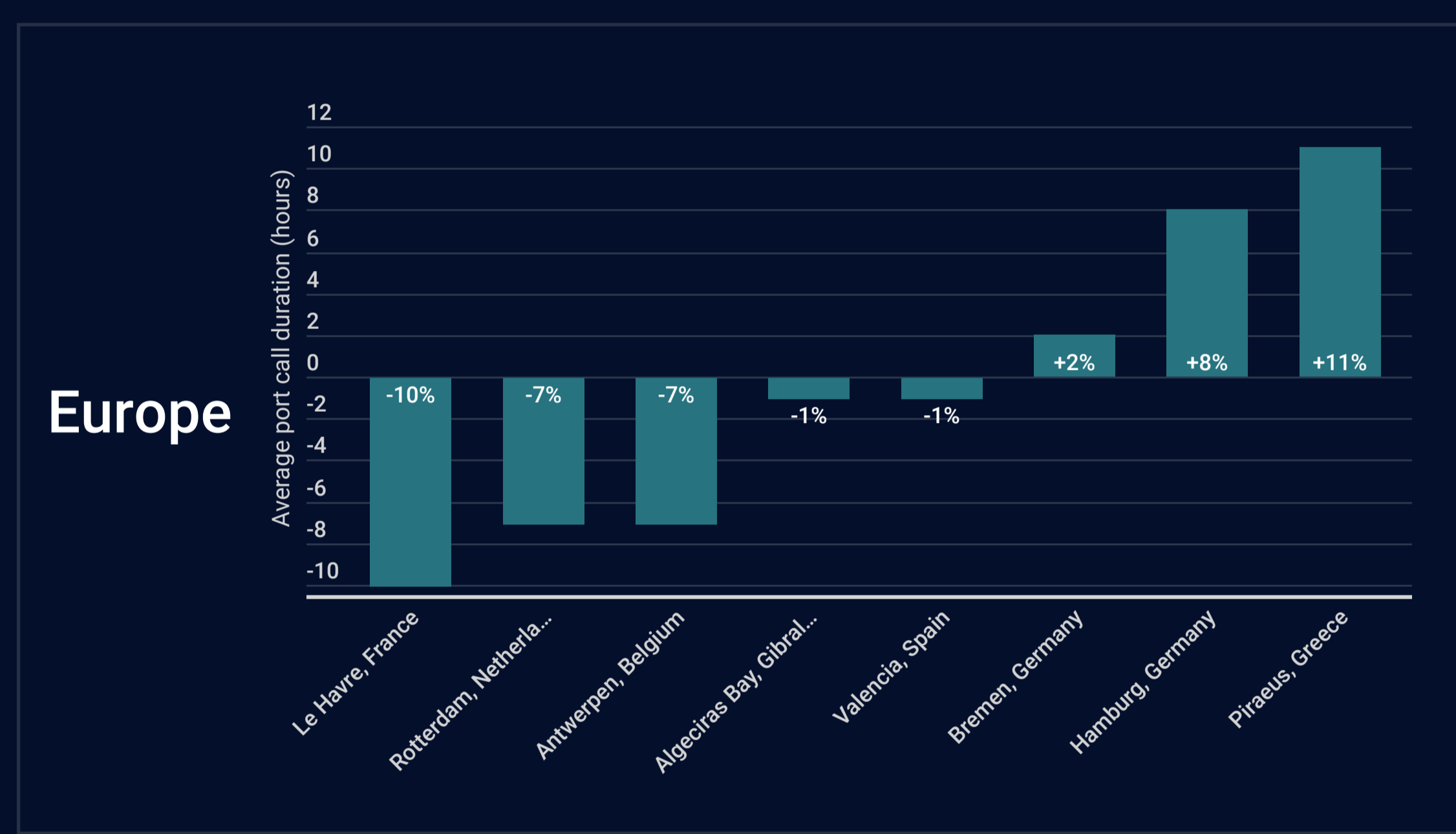
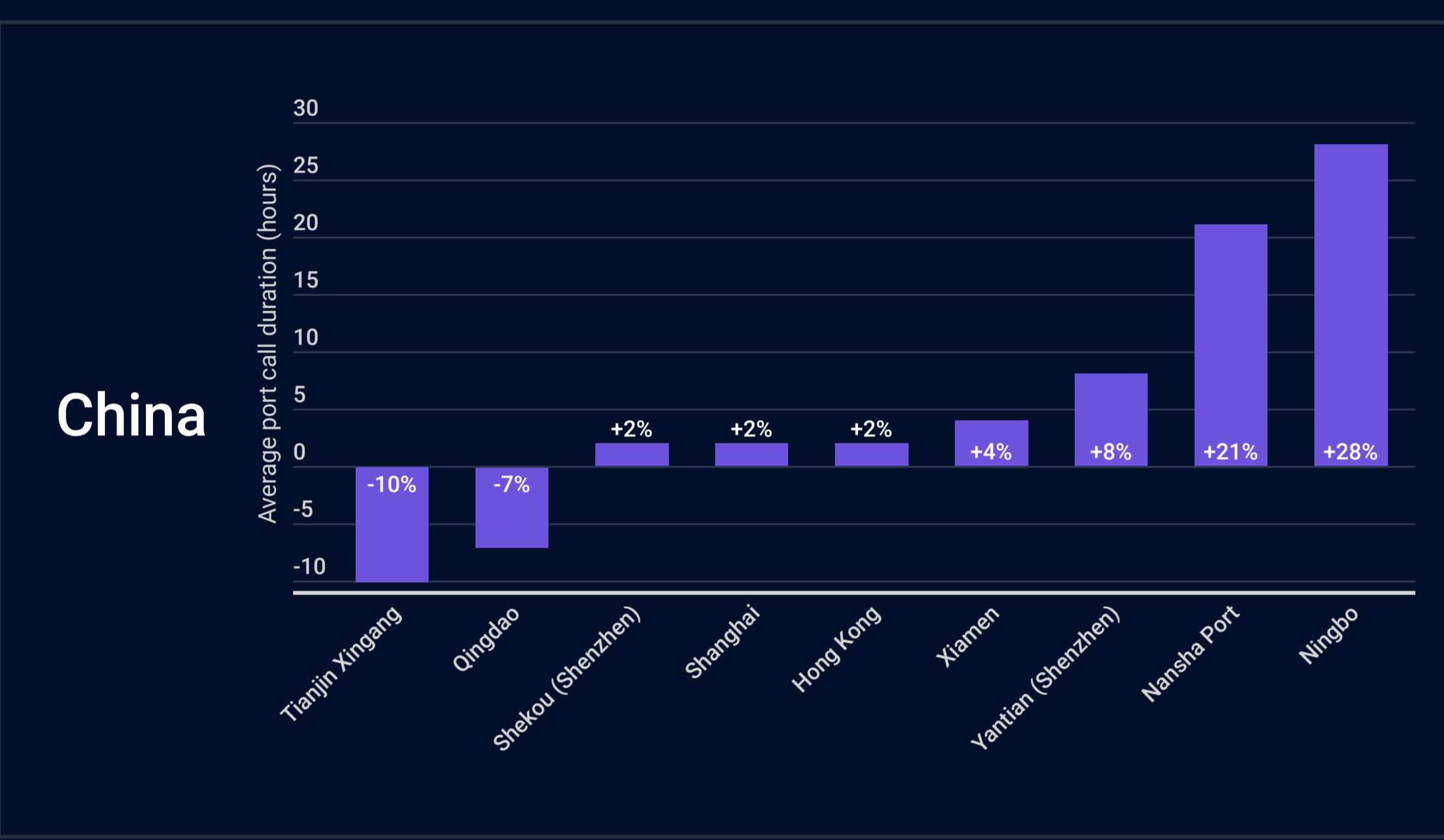
How many days did it take for container vessels to get from the U.S. and China to other parts of the world?

In the following section, we take a closer look at the movement of goods in and out of the United States and China, by analyzing the number of days it took container vessels to transit between these two countries and other ports globally.



## Port Call Duration per 1,000 TEUs

The section below shows the monthly trend for port call durations, normalized to 1,000 TEUs vessel capacity. This allows for a fair comparison between ports, regardless of the vessel sizes they serviced. Positive values show increased duration and could point to a drop in efficiency, or to congestion starting to build up at the port.



## Transshipment Connectivity & Efficiency

This section provides a detailed overview of the top transshipment ports in each region of the world, highlighting different transshipment options and possible improvements in turnover times. This analysis looks at average port call durations for container feeder vessels (up to 5,000 TEU capacity) at global transshipment hubs by region, and the number of countries that were reached by all vessel types directly after berthing at each of these ports in the past month.

